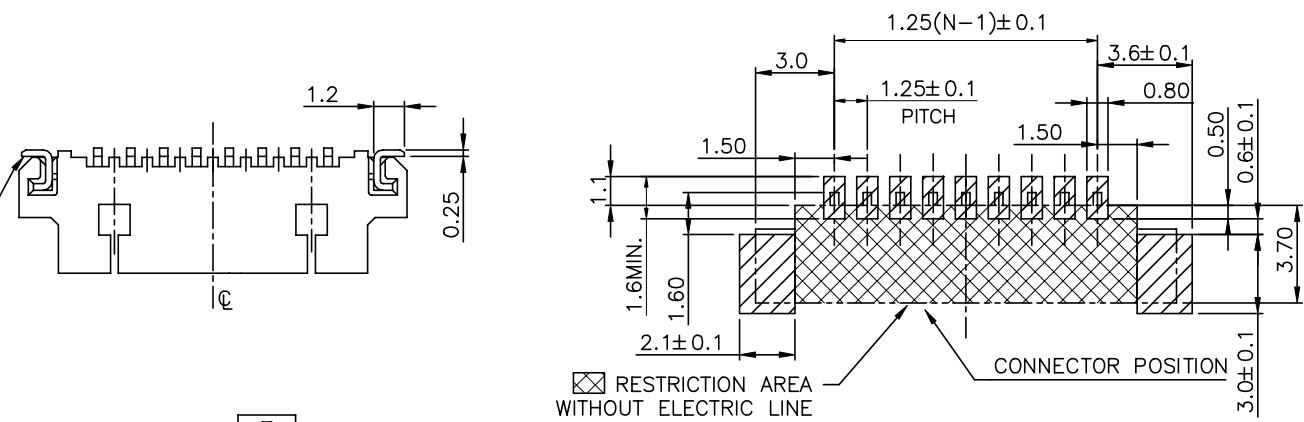
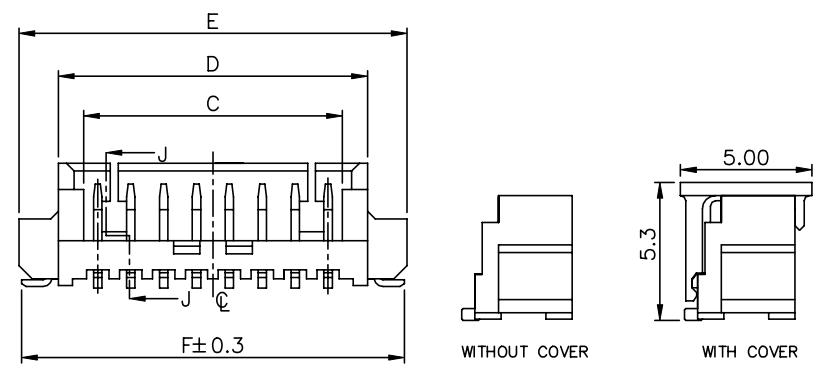
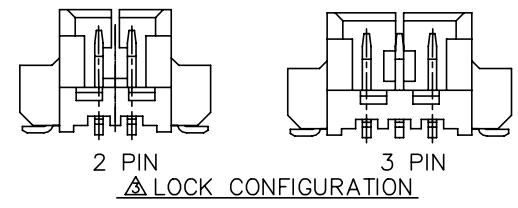
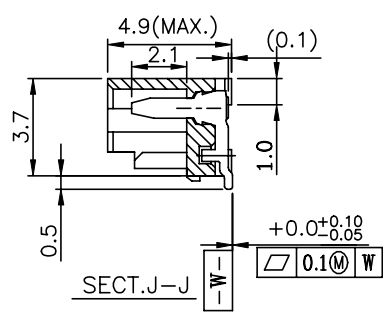
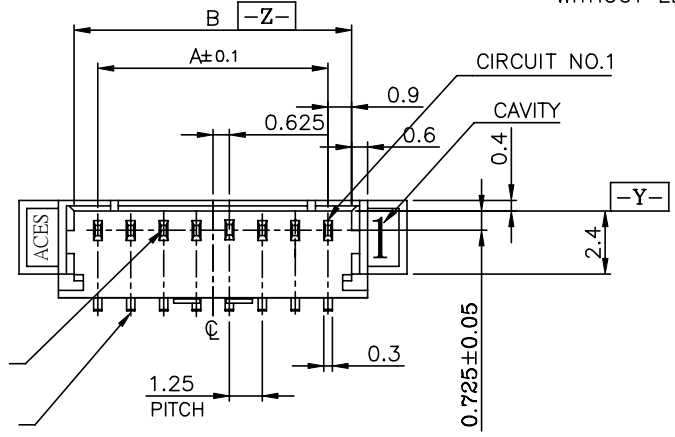




FITTING NAIL



RECOMMENDED P.C.BOARD PATTERN DIM.(REF)



- NOTES:
- MATERIAL:
    - HOUSING: HALOGEN FREE PLASTIC, HIGH TEMP.,UL94V-0.
    - CONTACT: COPPER ALLOY
    - FITTING NAIL:COPPER ALLOY
  - FINISH:
    - CONTACT:
      - UNDERPLATING: 50u" MIN NICKEL OVERALL. FINISH:SEE ORDER INFORMATION.
      - UNDERPLATING: 70u" MIN NICKEL OVERALL. FINISH:SEE ORDER INFORMATION.
    - FITTING NAIL:
      - UNDERPLATING: 50u" MIN NICKEL OVERALL. FINISH:SEE ORDER INFORMATION.
      - UNDERPLATING: 70u" MIN NICKEL OVERALL. FINISH:SEE ORDER INFORMATION.
  - REFLOW SOLDER CAPABLE TO 260°C PER ACES SPEC.
  - SPEC. PLS. REFER TO PS-50273-xxxx-xxx
  - PACKAGE PLS. SEE P/N LEGEND
  - APPLY EVEN CIRCUIT PRODUCTS.
  - LOCKING WINDOW:ONE PLACE FOR 2&3 CKTS. TWO PLACES FOR MORE THAN 4 CKTS.

P/N LEGEND		XXX	Material&Color	PACKING	
50273-XXX X-XXX	NO OF CKT	001	HF&Black	85205-xxxx-C-TRP ( With Cover)	
		002	HF&NATURAL	85205-xxxx-TRP ( Without Cover)	
		003	HF&Black	85205-XXXXC-W-TRP	
		S01	HF&Black	85205-xxxx-U-TRP	
		S02	HF&NATURAL	50273-XXXXC-TRP	
PACKING	NO OF CKT	004	HF&Black	50273-XXXXC-TRP	
		P01	HF&Black	85205-XXXXC-U-TRP	
		005	HF&Black	85205-xxxx-C-TRP ( With Cover)	
		006	HF&NATURAL	85205-xxxx-C-TRP ( With Cover)	
					85205-xxxx-TRP ( Without Cover)
PLATING	NO OF CKT	P02	HF&Black	85205-xxxx-TRP	
		007	HF&NATURAL	85205-xxxx-TRP ( Without Cover)	
		008	HF&NATURAL	50273-xxxx-05-TRP ( With Cover)	
					50273-xxxx-07-TRP ( Without Cover)
		W05	HF&NATURAL	85205-xxxx-04-TRP ( With Cover)	

- L:PURE TIN  
 1:GOLD FLASH  
 N:MATT TIN(LEAD FREE)  
 C: 15u" GOLD ON CONTACT AND GOLD FLASH ON SOLDER  
 50u" MIN NICKEL UNDERPLATING OVERALL.  
 4: 3u" GOLD ON CONTACT AND GOLD FLASH ON SOLDER  
 D: 30u" GOLD ON CONTACT AND GOLD FLASH ON SOLDER  
 G: 15u" GOLD ON CONTACT AND GOLD FLASH ON SOLDER  
 70u" MIN NICKEL UNDERPLATING OVERALL.

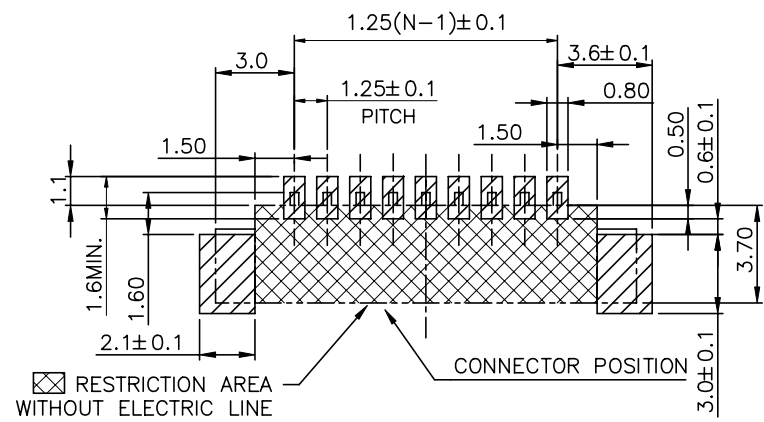
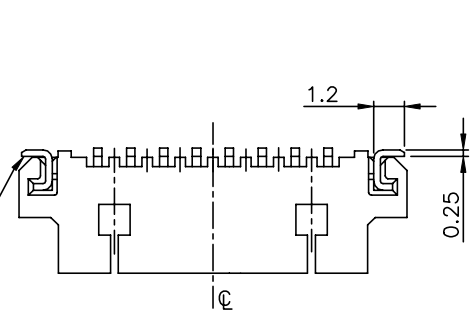
CKT	Dim A	Dim B	Dim C	Dim D	Dim E	Dim F
2	1.25	3.05	2.35	4.25	7.25	7.15
3	2.50	4.30	3.60	5.50	8.50	8.40
4	3.75	5.55	4.85	6.75	9.75	9.65
5	5.00	6.80	6.10	8.00	11.00	10.90
6	6.25	8.05	7.35	9.25	12.25	12.15
7	7.50	9.30	8.60	10.50	13.50	13.40
8	8.75	10.55	9.85	11.75	14.75	14.65
9	10.00	11.80	11.10	13.00	16.00	15.90
10	11.25	13.05	12.35	14.25	17.25	17.15
11	12.50	14.30	13.60	15.50	18.50	18.40
12	13.75	15.55	14.85	16.75	19.75	19.65
13	15.00	16.80	16.10	18.00	21.00	20.90
14	16.25	18.05	17.35	19.25	22.25	22.15
15	17.50	19.30	18.60	20.50	23.50	23.40

QUALITY SYMBOLS	DRAWN BY	DATE	
MAJOR	Huang,ShunSen	23/12/22	
CRITICAL	CHECKED BY	DATE	
GENERAL TOLERANCES (UNLESS SPECIFIED)	Lu Jing Quan	23/12/22	TITLE
X. ±0.5	APPROVED BY	DATE	1.25mm S/T WIRE TO BOARD SMT TYPE
X ±0.25	hsieh fu yu	23/12/22	UNITS
XX ±0.15			mm
.XXX ±0.1			SCALE
ANGLES ±2°			5:1
			SHEET NO.
			1 OF 2
			SIZE
			A4
			SCALE
			W
			REV
			W
			RFQ NO.
			N/A
			DWG NO.
			50273-XXXX-XXX

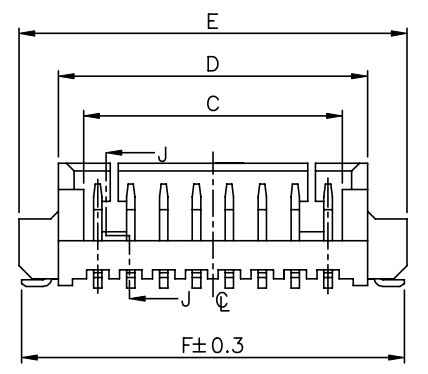
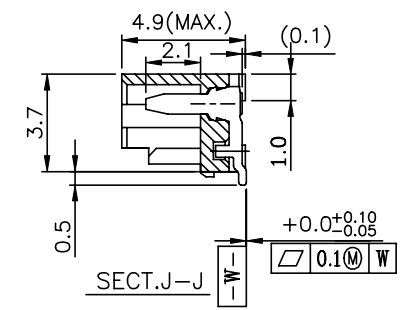
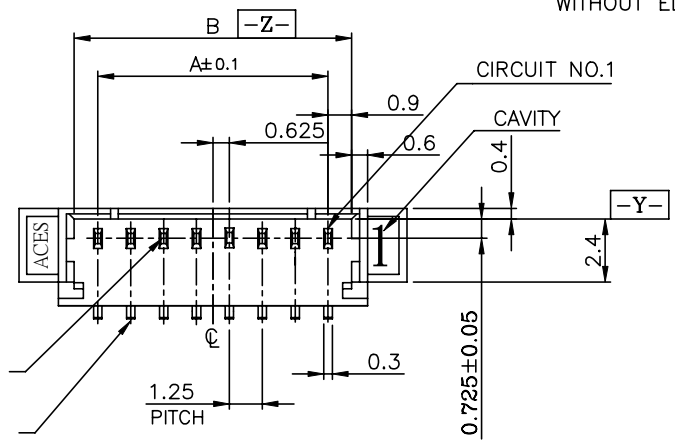
This page does not have the option for 50273-0100N-002



FITTING NAIL



RECOMMENDED P.C.BOARD PATTERN DIM.(REF)



- NOTES:
- MATERIAL:
    - HOUSING: HALOGEN FREE PLASTIC, HIGH TEMP.LCP,UL94V-0.
    - CONTACT: COPPER ALLOY
    - FITTING NAIL:COPPER ALLOY
  - FINISH:
    - CONTACT:
      - UNDERPLATING: 50u" MIN NICKEL OVERALL.
      - FINISH:SEE ORDER INFORMATION.
    - FITTING NAIL:
      - UNDERPLATING: 50u" MIN NICKEL OVERALL.
      - FINISH:SEE ORDER INFORMATION.
  - REFLOW SOLDER CAPABLE TO 260°C PER ACES SPEC.
  - SPEC. PLS. REFER TO PS-50273-xxxxx-xxx
  - PACKAGE PLS. SEE P/N LEGEND
  - APPLY EVEN CIRCUIT PRODUCTS.

P/N LEGEND

50273-XXX X X-XXX

NO OF CKT	XXX	Material&Color	PACKING
PACKING	002	LCP&NATURAL	85205-xxxx-TRP
0:TAPE & REEL			
PLATING			
N:MATT TIN(LEAD FREE)			

CKT	Dim A	Dim B	Dim C	Dim D	Dim E	Dim F
10	11.25	13.05	12.35	14.25	17.25	17.15

QUALITY SYMBOLS	DRAWN BY	DATE			
MAJOR Ⓜ	Huang,ShunSen	23/12/22			
CRITICAL Ⓢ	CHECKED BY	DATE	<b>1.25mm S/T WIRE TO BOARD SMT TYPE</b>		
GENERAL TOLERANCES (UNLESS SPECIFIED)	Lu Jing Quan	23/12/22			
X. ±0.5	APPROVED BY	DATE	UNITS	SIZE	RFQ NO.
X ±0.25	hsieh fu yu	23/12/22	mm	A4	N/A
XX ±0.15			SCALE	SHEET NO.	REV
.XXX ±0.1			5:1	2 OF 2	DWG NO.
ANGLES ±2°					50273-XXXXX-XXX

50273-0100N-002 for Matic only